



Issue 23: January 2021

## Latest news updates

The Lutterworth and Broughton Astley neighbourhood teams work very closely together. In March 2020, Leicestershire Police adopted a new workforce model which moved police resources back to neighbourhoods as well as investing in more police officers and Police Community Support Officers (PCSOs).

This means you are now served by the largest local team for Harborough and Wigston. The local teams are now supported by 10 shifts of Neighbourhood Patrol Officers (NPO's) as well as local CID officers.

**What this means for you:** With so many local resources, response times are faster; we are getting to more incidents quicker and this enables more time for proactive patrols. We are now getting to emergency incidents within our agreed service level agreement for response times. The Lutterworth beat also has the quickest response time for a priority attendance for the Neighbourhood Policing Area (NPA).

## Visibility

We take 'visibility' seriously in the police. We class an officer or PCSO being visible when they are not in a police station, this is the time when they are out on patrol or responding to incidents. The amount of time staff spend in the station varies per role. These figures are a good guide to how much time is being spent in the our neighbourhood areas.

Of the 2 Harborough beats, 2 Lutterworth beats and 3 Wigston beats: Lutterworth and Broughton Astley officers are the most visible. Over the last 7 months all staff have been in the high 60% to early 70% peaking at near 80% of their time out on patrol. Our staff work various patterns but on average, this means your officers only spend about 1.5 hours in a station as part of their shifts, the rest of the time is on patrol.

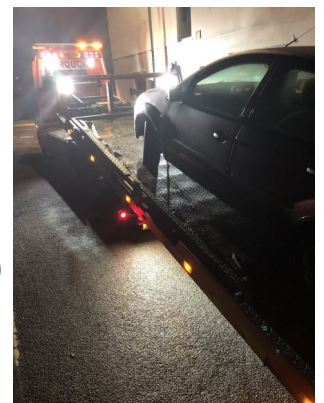
**What this means for you:** Lutterworth and Broughton Astley residents are more likely to see police, they are more likely to have faster response times and officers are more likely to be present in patrol areas to prevent crime in the first place. You won't always see us, but this is a real step in the right direction for local policing. I know some people have raised concerns about the lack of a police presence in the past.

## Recovered Vehicles



**You told us that you want us to make the roads safer** and so we have targeted this issue. This includes driving license offences, MOT, tax and insurance offences as well as poor or dangerous driving. COVID has curtailed that slightly, the DVLA removed our tax powers for most of the year, however we now have them back.

The teams have worked incredibly hard. We will have seized nearly 100 vehicles this year. We have also dealt with over 80 offenders through the courts or streamlined process for driving offences (e.g. drink driving, license or insurance offences).



## Speed Camera Vans

To help with our beat priorities, we are supported by the Road Safety Partnership. The RSP not manage the fixed cameras and work on the mobile vans, hey also assist with Community Speedwatch and do their best to make the roads safer. The Road Safety Partnership give local teams a summary of their activities. The sites visited in November were, including offences reported:



- A4304 Husbands Bosworth – 0
- A4304 Lubbenham Hill – 27
- A4304 Lubbenham Village – 21
- A4304 North Kilworth – 8
- A47 Houghton on the Hill – 0
- B581 Broughton Way, Broughton Astley – 13
- B581 Station Road, Broughton Astley – 0
- Rugby Road, South Kilworth – 0

This amounts to 69 offences across 23 hours of checks. This equates to around 3 offences per hour and is positive. Some locations particularly in Harborough had the most offences detected and I am sure the camera van will be back to those locations. You can report speeding concerns on the Road Safety Partnerships website: <https://www.speedorsafety.com/>

## Crime Statistics

Harborough and Wigston now has the 3<sup>rd</sup> lowest crime statistics in the force, improving by one place. Broughton Astley has the lowest crime stats for the policing area, Lutterworth has the third lowest.

We ran a specific operation in Lutterworth from September to November to tackle the annual spike in crime, the stats are provided below. Theft in Lutterworth, during that period, spiked significantly. We used the latest technology to target the repeat locations and deter offenders from committing crime. This not only caused a big decrease in theft offences, but also reduced offences overall.

All Crime

	2017	2018	2019	2020	Change
September	77	92	106	71	-35
October	104	126	109	89	-20
November	77	96	107	95	-12

Theft Offences

	2017	2018	2019	2020	Change
September	42	46	59	33	-26
October	48	63	70	26	-44
November	39	58	71	26	-45

### What this means for you?

115 less theft offences, or 67 less offences overall. With the population increasing the actual crimes per person rate has gone down significantly, meaning you are less likely to be a victim of crime in Lutterworth and Broughton Astley.

## Next Edition

We will introduce your teams with contact details, and continue to update you on our work towards the identified priorities. From everyone on the team, we wish you a safe and Merry Christmas and a Happy New Year.